



290 CORPORATE DRIVE
LUMBERTON, NC 28358

WWW.TITANFCI.COM
TITAN@TITANFCI.COM

910.735.0000 TEL
910.738.3848 FAX

PRODUCT GUIDE



**GO
WITH
THE
FLOW!**

TITAN FLOW CONTROL, INC.
YOUR PIPELINE TO THE FUTURE!

Titan Flow Control is a high quality manufacturer of Check Valves, Butterfly Valves, Pipeline Strainers, Pump Products, Fabricated Designs, and Pipeline accessories applicable to most industrial and commercial requirements. Titan Flow Control was established in the year 2000 by industry veterans with over 300 years of combined experience. We are located in the southeastern part of North Carolina and currently occupy over 70,000 ft² of office, warehouse, and manufacturing space.

- "Y" STRAINERS
- BASKET STRAINERS
- DUPLEX STRAINERS
- STRAINING ELEMENTS
- FRP STRAINERS
- TEMPORARY STRAINERS
- FABRICATED STRAINERS
- "T" STRAINERS
- IN-LINE CHECK VALVES
- SILENT CHECK VALVES
- WAFER TYPE CHECK VALVES
- GLOBE TYPE CHECK VALVES
- SINGLE DISC CHECK VALVES
- DUAL DISC CHECK VALVES
- BALL VALVES
- BUTTERFLY VALVES
- SUCTION DIFFUSERS
- TRI-FLOW VALVES
- FOOT VALVES
- AUTOMATIC STRAINERS
- AND MUCH MORE...

TELEPHONE: 910.735.0000

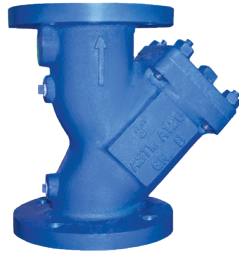
TITAN FLOW CONTROL, INC.

"Y" Type Strainers

Cast Iron



YS 12-CI
Class 250
Threaded
Sizes: 1/4 ~ 3"



YS 58-CI
Class 125
Flanged
Sizes: 2 ~ 24"



YS 59-CI
Class 250
Flanged
Sizes: 2 ~ 12"

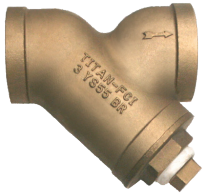
**Need a strainer?
...It's a no-brainer!**

We routinely stock:

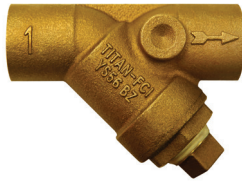
- Sizes 1/4" through 24"
- Pressure Classes 125 ~ 2500
- Standard materials
- Exotic materials
- All end connections

If we don't have it - we'll help you find it!

Bronze & Brass



**YS 55-BR
YS 55-BZ**
Class 125
Threaded
Sizes: 1/4 ~ 3"



**YS 56-BR
YS 56-BZ**
Class 125
Solder
Sizes: 1/4 ~ 3"



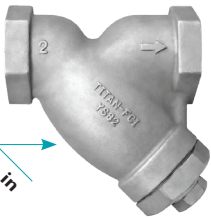
YS 52-AB
Class 250
Threaded
Sizes: 1/4 ~ 3"



YS 54-AB
Class 150
Flanged
Sizes: 2 ~ 12"

Lead Free!*
(See note on the following page)

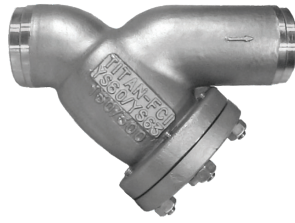
Carbon & Stainless Steel



Available in
WC6
Alloy 20
316L

**YS 81-CS
YS 81-SS**
Class 600
Threaded
Sizes: 1/4 ~ 3"

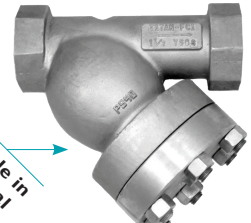
**YS 82-CS
YS 82-SS**
Class 600
Socket Weld
Sizes: 1/4 ~ 3"



**YS 63-CS
YS 63-SS**
Class 300
Butt Weld
Sizes: 1/2 ~ 12"



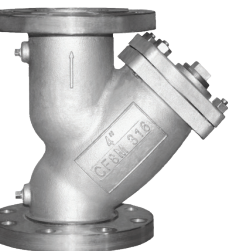
**YS 65-CS
YS 65-SS**
Class 600
Butt Weld
Sizes: 1/2 ~ 12"



**YS 83-CS
YS 83-SS**
Class 1500
Threaded
Sizes: 1/2 ~ 3"

**YS 84-CS
YS 84-SS**
Class 1500
Socket Weld
Sizes: 1/2 ~ 3"

Available in
Additional
Materials



**YS 61-CS
YS 61-SS**
Class 150
Flanged
Sizes: 1/2 ~ 24"



**YS 62-CS
YS 62-SS**
Class 300
Flanged
Sizes: 1/2 ~ 12"



**YS 64-CS
YS 64-SS**
Class 600
Flanged
Sizes: 1/2 ~ 12"

**High Pressure
Models Available**

**YS 68-CS
YS 68-SS**
Class 1500
Flanged
Sizes: 2 ~ 8"



**YS 69-CS
YS 69-SS**
Class 1500
Butt Weld
Sizes: 2 ~ 8"

**YS 70-CS
YS 70-SS**
Class 2500
Flanged
Sizes: 2 ~ 8"

**YS 71-CS
YS 71-SS**
Class 2500
Butt Weld
Sizes: 1 1/2 ~ 10"

TITAN FLOW CONTROL, INC.

Basket Strainers (Simplex)

Cast Iron



BS 25-CI
Class 125
Threaded
Quick-Open Cover
Sizes: $\frac{3}{8}$ " ~ 3"



BS 25F-CI
Class 125
Flanged
Quick-Open Cover
Sizes: 1 ~ 8"



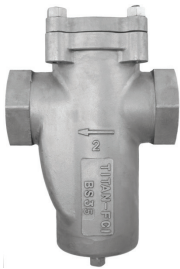
BS 55-CI
Class 125
Flanged
Clamp Cover
Sizes: 2 ~ 12"

Available with
bolted and
clamped cover



BS 65-CI
Class 125
Flanged
Bolted Cover
Sizes: 2 ~ 12"

Carbon & Stainless Steel



BS 35-CS
BS 35-SS
Class 150/300
Threaded
Sizes: $\frac{3}{8}$ " ~ 3"

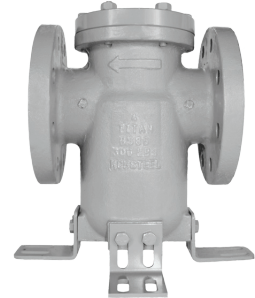


BS 35F-CS
BS 35F-SS
Class 150
Flanged
Sizes: 1 ~ 8"



BS 85-CS
BS 85-SS
Class 150
Flanged
Sizes: 2 ~ 12"

Available with
bolted and
clamped cover



BS 86-CS
BS 86-SS
Class 300
Flanged
Sizes: 2 ~ 12"

Fiberglass & Aluminum Bronze



BS 55-FRP
Class 150
Flanged
Sizes: 4 ~ 20"



BS 95-AB
Class 150
Flanged
Sizes: 2 ~ 12"

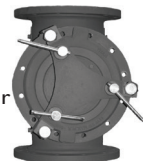
Lead Free!*

* BS95-AB, meet the requirements for **Lead Free** use in potable water systems. The lead content in the wetted surfaces of these products is 0.25% or less as determined by a weighted average. For more information on lead free requirements, contact Titan Flow Control, Inc.



BS 25-CI
Quick-Opening -
Knob Type Cover
Sizes: $\frac{3}{8}$ " ~ 3"

BS 85-CS
Full Rated -
Clamped Cover
Sizes: 2 ~ 12"



Optional Cover Designs

Most Basket Strainer models can be constructed with various cover designs including bolted, clamped, and hinged.

TITAN FLOW CONTROL, INC.

Duplex Strainers



Cast Iron



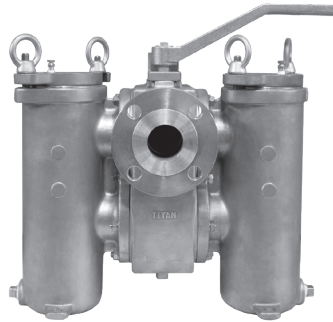
DS 595-CI

Class 125
Threaded
Cast Iron
Sizes: 3/4 ~ 2 1/2"

DS 695-CI

Class 125
Flanged
Cast Iron
Sizes: 1 ~ 4"

Stainless & Carbon Steel



DS 596-CS/SS DS 796-CS/SS DS 696-CS/SS DS 896-CS/SS

Class 150 Class 300
Threaded, Flanged
Carbon Steel, Stainless Steel
Sizes: 3/4 ~ 8"

Aluminum Bronze



DS 596-AB

Class 150
Threaded
Aluminum
Bronze
Sizes: 3/4 ~ 2 1/2"

DS 696-AB

Class 150
Flanged
Aluminum
Bronze
Sizes: 1 ~ 4"

Pump Products



Tri-Flow Valve TF 21-CI

Class 125
Flanged
Cast Iron
Sizes: 2 ~ 20"



Foot Valve FV 50-DI

Class 150
Flanged
Ductile Iron
Sizes: 2 ~ 12"

Ball Valves



BV 25-SS

Male x Female
3000 WOG
Full Port Sizes: 1/4 ~ 1 1/2"
Reduced Port Size: 2"



BV 60-BZ

600 WOG
Male x Female
Full Port Design
Sizes: 1/4 ~ 2"



Suction Diffuser SD 22-CI

Class 125
Flanged
Cast Iron
Sizes: 2 x 1 1/4 ~ 18 x 18"



Blow-off Valves

Ball Valves can be professionally installed as Blow-off Valves at our factory before shipping.

Foot Valves

Check Valve Models CV 80-SS and CV 20-BZ can also be designed as Foot Valves



TITAN FLOW CONTROL, INC.

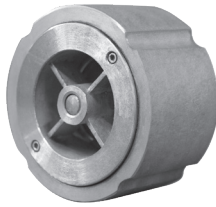
Check Valves

Center Guided



Available with soft and metal seats

CV 90-DI
Class 150/300
Wafer Type - Silent
Ductile Iron
Sizes: 2 ~ 12"



Available with soft and metal seats

CV 91-SS
Class 150/300
Wafer Type - Silent
Stainless Steel
Sizes: 2 ~ 12"



CV 80-SS
Class 300
Threaded / In-Line
Stainless Steel
Sizes: $\frac{3}{8}$ ~ 3"



CV 20-BR
400 WOG
Threaded / In-Line
Brass
Sizes: $\frac{1}{4}$ ~ 2"



Available with soft and metal seats

CV 50-DI
Class 150
Flanged - Globe Style
Ductile Iron
Sizes: 2 ~ 36"



Available with soft and metal seats

CV 51-CS / CV 51-SS
Class 150
Flanged - Globe Style
Carbon & Stainless Steel
Sizes: 2 ~ 36"



Available with soft and metal seats

CV 52-DI
CV 52-CS / CV 52-SS
Class 300
Flanged - Globe Style
Ductile Iron, Carbon & Stainless
Sizes: 2 ~ 36"

Single & Dual Disc



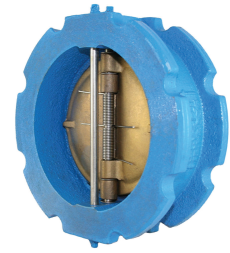
CV 12-CS / CV 12-SS
Class 150
Short Pattern - Wafer Type
Carbon & Stainless Steel
Sizes: 2 ~ 24"



CV 31-DI
Class 150
Wafer - Swing Type
Ductile Iron
Sizes: 2 ~ 12"



CV 32-CS / CV 32-SS
Class 150
Wafer - Swing Type
Carbon & Stainless Steel
Sizes: 2 ~ 12"



CV 41-DI
Class 150
Wafer - Dual Disc
Ductile Iron
Sizes: 2 ~ 48"



CV 42-CS / CV 42-SS
Class 150/300
Wafer - Dual Disc
Carbon & Stainless Steel
Sizes: 2 ~ 48"



CV 44-CS / CV 44-SS
Class 300
Wafer - Dual Disc
Carbon & Stainless Steel
Sizes: 2 ~ 48"



CV 46-CS / CV 46-SS
CV 47-CS / CV 47-SS
Class 600 & 900
Wafer - Dual Disc
Carbon & Stainless Steel
Sizes: 2 ~ 48"

Lead Free* Trim on Titan Check Valves

*Titan's check valves have either stainless steel or aluminum bronze trim to meet the requirements for Lead Free use in potable water systems. The lead content of the wetted surfaces of Titan's iron and steel check valve models is 0.25% or less as determined by a weighted average. For more information on lead free requirements, contact Titan Flow Control, Inc.

TITAN FLOW CONTROL, INC.

Butterfly Valves & Actuation

Cast & Ductile Iron



BF 75-CI
200 PSI
Wafer Type
Cast Iron
Sizes: 2 ~ 48"



BF 76-DI
200 PSI
Lug Type
Ductile Iron
Sizes: 2 ~ 48"

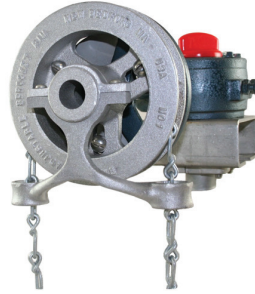
Butterfly Valve Features:

- Seat is Phenolic Backed Cartridge
- Sizes 2" through 12" in Stock
- Valve Bodies are Epoxy Painted
- Rated for 200 psi Bidirectional Service
- Extended Neck provides 2" of Piping Clearance
- Alignment Holes for easy Installation
- Designed in Accordance with ASME/ANSI Class 125/150
- When ordered with Aluminum Bronze discs, Titan Butterfly Valves meet the requirements for **Lead Free*** use in potable water systems. The lead content in the wetted surfaces of Titan Butterfly Valves with AB discs is 0.25% or less as determined by a weighted average. For more information on lead free requirements, contact Titan Flow Control, Inc.

Lead Free*
Butterfly Valve Discs
Available!

Mounting Options

Butterfly Valves are available with 10-position, actuator, gear box, and chain wheel mounting. Stem Extensions are also available.



Chain Wheel



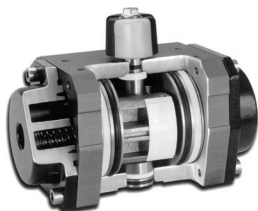
Gear Box

Universal Mounting Flange

The cast-in actuator flange is universally designed in accordance with ISO 5211 standard dimensions. The mounting flange can accommodate all types of operators such as: 10-position handle kits, gear operators, electric actuators, and pneumatic actuators. For actuators, Titan FCI may provide both direct mount and bracket mount designs. Please contact Titan FCI about your specific automation requirements.

Butterfly Valve Actuation

Titan FCI offers a complete line of Pneumatic Actuators and Electric Actuators.



Pneumatic Actuator
with Travel Indicator



Electric Actuator
for Sizes 3" & Smaller



Electric Actuator
for Sizes 4" & Larger



Electric
Actuator Mounting



Pneumatic
Actuator Mounting

Actuator Accessories:

- Three and Four-Way Direct Mount Solenoid Valves
- Pneumatic & Electro-Pneumatic Positioners
- Limit Switches
- Speed Controls
- Manual Override
- Lock Out Devices
- 4-20 MA and 3-15 PSI

TITAN FLOW CONTROL, INC.

Fabricated Products

Fabricated Products

Titan FCI has the capability of designing and fabricating a variety of products to your exact specifications. Our fabricated products include:

- "Y" Strainers
- Duplex Strainers
- Steam Jacketed Strainers
- Fiberglass Reinforced Plastic Strainers
- And much more
- Basket Strainers
- Orifice Plates
- Temporary Strainers
- Spectacle Flanges
- Plate Strainers
- Single Blinds
- "T" Strainers
- Ring Spacers

Please contact the factory directly for any special projects or applications you may require.



Fabricated "Y" Strainer



Fabricated Basket Strainer



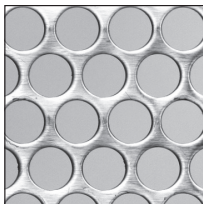
Fabricated Duplex Strainer

Replacement Screens & Baskets

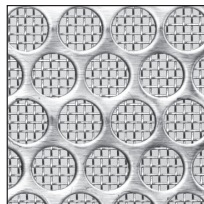
Titan FCI can manufacture straining elements for all types of strainers including:

- "Y" Strainers
- "T" Strainers
- Basket Strainers
- Duplex Strainers

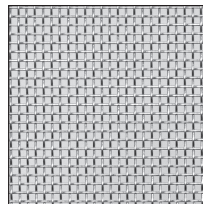
Titan FCI can manufacture straining elements in a wide variety of perforations, meshes, and materials (Type 304, Type 316, Alloy 20, Monel).



Perforated Screen



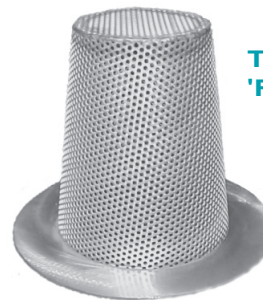
Wire Mesh with Perforated Backing



Wire Mesh

Temporary Strainers

Titan FCI can also manufacture Temporary / Conical Strainers.



Temporary Strainer 'Pilgrim's Hat' Type



Temporary Strainer 'Witch's Hat' Type

We can also provide replacement screens and baskets for our competitor's strainers.

Just send us your prints, samples, or simply give us your requirements and let us design a straining element that is right for your application. In most cases, straining elements can be ordered by referencing Titan FCI's or any other manufacturers' strainer model number.



Titan Flow Control, Inc. ***A Letter from our President***

Titan Flow Control, Inc. manufactures a complete line of very high quality pipeline strainers, double disc check valves, globe type silent check valves, and soft seated butterfly valves. Our product offerings include both a high quality import line as well as units crafted to meet full domestic requirements whenever needed.

Our management team has been designing and manufacturing industrial strainers for over 30 years. We have the ability to custom design units to conform to even the most complicated piping configurations imaginable. Our screen fabrication shop can quickly provide special screens in a wide selection of both perforated and wire mesh materials in sizes ranging from 20 through 500 mesh. We offer products fabricated from numerous alloys including bronze, ductile and cast iron, carbon steel, stainless steel, monel, alloy 20, nickel and hastelloy, as well as many others.

Every Titan unit is fabricated with premium components from certified vendors. The components that go into making a Titan FCI valve must conform to Titan's rigid standards. To test for meeting conformity, on arrival, every component is subjected to and must pass multiple, rigorous quality inspection procedures. Every casting carries a foundry heat number for immediate identification and for subsequent traceability. All parts are precision machined on the newest and most modern numerical control machinery - all manufactured in strict adherence to internationally recognized standards and specifications, including ANSI/ASME/API/NACE and ISO. All products manufactured by Titan FCI are 100% hydrostatically tested in accordance with applicable ANSI, API, MSS standards and customer specifications.

Titan FCI is proud to have earned one of the highest quality/price ratios of any reputable strainer/valve company in the world.

You will find the most impressive fact about a Titan FCI product is the product itself. Titan will be more than pleased to provide you with a sample of any product you request.

*Martin Gibbons
President*

***Your Titan Flow Control
Sales Representative:***

***If you need help contacting
Titan Sales Representative,
call Titan FCI at (910)735-0000.***

Titan FCI's new manufacturing facility - right off of Interstate 95, Exit 17.

